



Hot

Dis. 20 4007

Texture speciali realizzate con la tecnica della stampa digitale, che donano un tocco ricercato e distintivo ai tessuti con le più elevate performance tecniche della gamma Flukso. Una trasformazione radicale: i motivi studiati esaltano la superficie del tessuto, che acquisisce un'anima decorativa e nuova, in grado di donare personalità ed energia agli ambienti più eleganti.

I pattern proposti da Flukso vengono applicati a una selezione di colori della collezione di partenza, che può essere utilizzata in abbinamento per creare effetti alternati di unito e stampato.

Hot è un tessuto in poliestere totalmente prodotto e testato in Italia, studiato per il mobile imbottito. L'estrema morbidezza e volume di Hot sono ottenuti con particolari metodi di tintura.

Il tessuto, ad alta resistenza e 100% ignifugo in ordito e trama, supera i più severi test di reazione al fuoco rendendo possibile il suo utilizzo nel settore professionale, alberghiero e contract.

Special textures made by digital printing technique, which give a sophisticated and distinctive touch to the high-performing fabrics of the Flukso range. A radical transformation: the new patterns enhance the fabric surface, which takes on a new decorative soul that gives personality and energy to the most elegant settings.

The patterns proposed by Flukso are applied to a selection of colors from the base collection, which can be combined to create alternating solid and colorful effects.

Hot is a polyester fabric entirely manufactured and tested in Italy which has been studied for the upholstered furniture sector. Special dyeing methods are used to provide volume to Hot fabrics and make them extremely soft.

This fabric is highly resistant and both its warp and weft are 100% polyester FR made. Since it has successfully passed the strictest FR certifications, it's suitable for hospitality and contract use.

SETTORI / SECTORS



APPLICAZIONI / USES



CARATTERISTICHE / FEATURES



ON REQUEST

ON REQUEST

ON REQUEST

ON REQUEST

SCHEDA TECNICA / TECHNICAL DETAILS

	UNITÀ / UNIT	NORMA / TEST METHOD	VALORI / LIMIT VALUE
Peso / Weight	g/m ²	-	450
Altezza / Width	cm	-	140 ± 3%
Composizione / Composition	-	-	100% PES FR
Pelosità superficiale e pilling / Fuzzing and pilling test	-	UNI EN ISO 12945-2	4
Resistenza all'abrasione / Abrasion resistance (Martindale)	cicli/cycles	UNI EN ISO 12947-2	45.000
Valutazione cambio colore a 12.000 cicli Martindale / Colour change evaluation at 12.000 Martindale cycles	grey scale	UNI EN ISO 105-A02	3/4
Solidità colori allo sfregamento a secco / Colour fastness to dry rubbing	grey scale	UNI EN ISO 105-X12	4/5
Solidità colori allo sfregamento a umido / Colour fastness to wet rubbing	grey scale	UNI EN ISO 105-X12	4/5
Solidità colori alla luce / Colour fastness to light (Xenotest)	blue scale	UNI EN ISO 105-B02	4/5

RESISTENZA AL FUOCO FIRE RESISTANCE

UNI 9175 classe 1M
EN 1021-1
EN 1021-2
BS 5852-1 cigarette test
BS 5852-1 match test
BS 5852 crib 5
DIN 4102 B1
NF P 92 503-507 M1
IMO FTP CODE 2010

NORME DI PULIZIA — Per le istruzioni dettagliate di lavaggio e manutenzione del tessuto e per conoscere i prodotti più adatti alla sua pulizia, consultare il sito www.flukso.it.

CLEANING INSTRUCTIONS — Check our website www.flukso.it for detailed washing and maintenance instructions related to the fabric and to know the most suitable cleaning products.



Made in Italy

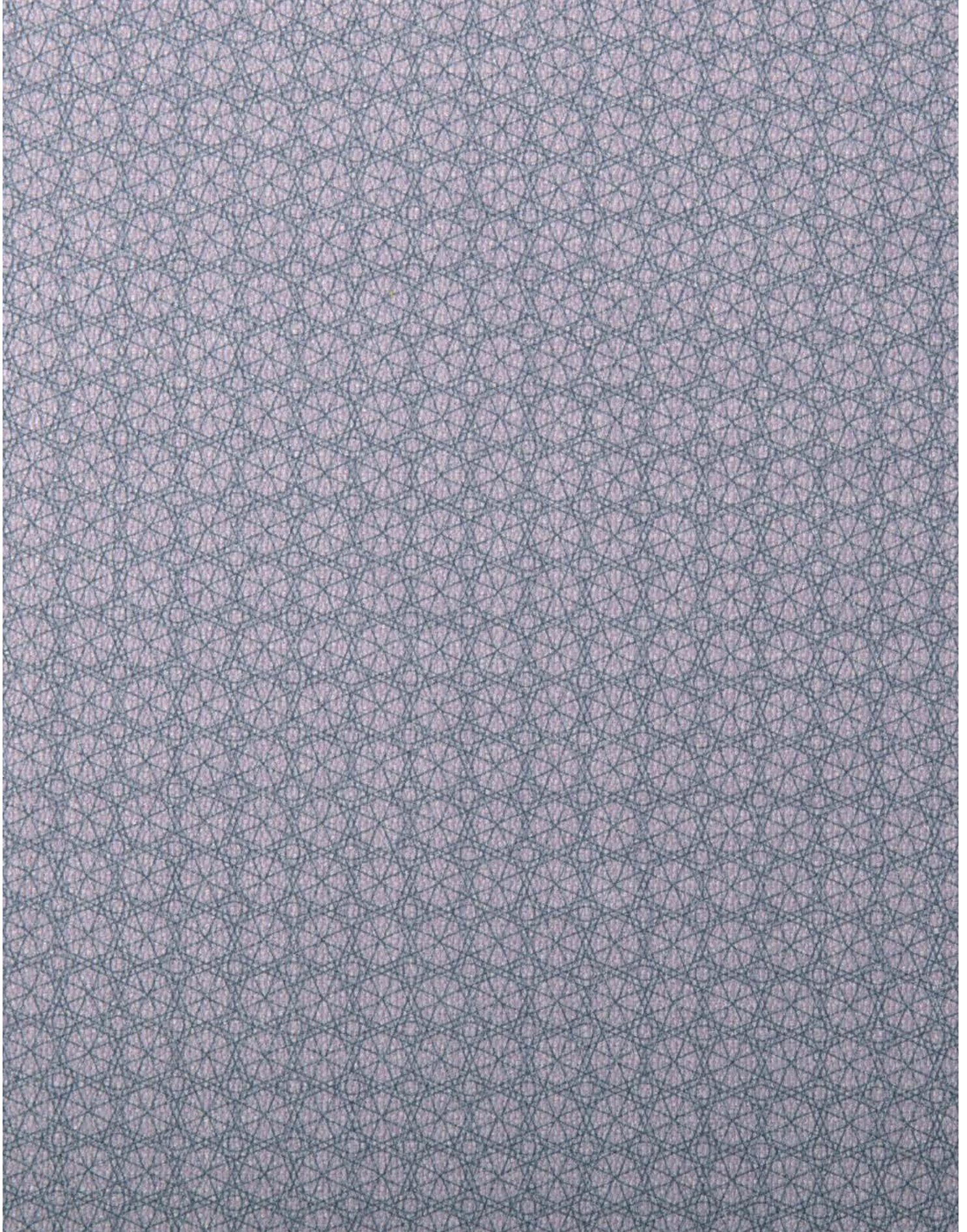
Campione gratuito di modico valore non destinato alla vendita, esente IVA punto D - Art. 2 DPR 26.10.1972 n°633. Esente DDT punto 6 - Art. 4 DPR 06.10.1978 n°627.

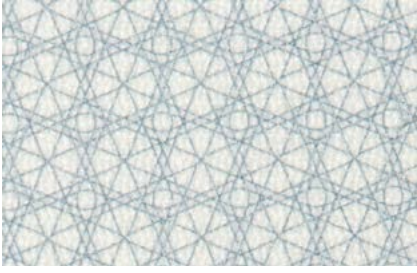
Questi valori sono dati a titolo indicativo ed in buona fede e non possono essere considerati in alcun caso vincolanti. L'impiego del prodotto deve essere valutato in base a ciò che si deve realizzare. Non si risponde del suo utilizzo per impieghi impropri. Sono ammesse leggere differenze di colori tra lotti diversi.

The overmentioned data correspond to average values communicated in good faith, but they cannot be considered as a contract document. The product use has to be considered in term of what has to be realized. The product cannot be held up responsible when it is improperly used. Slight colour differences among several lots are admitted.

Hot Dis. 20 4007

**CONTRACT & RESIDENTIAL
PRINTED COLLECTION**

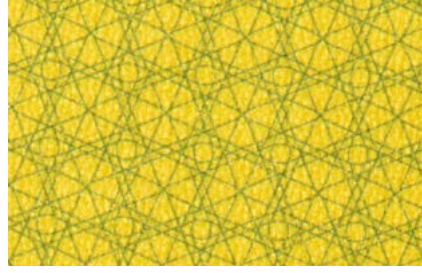




6203



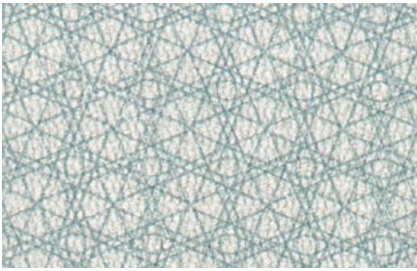
203



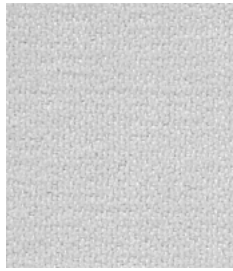
6234



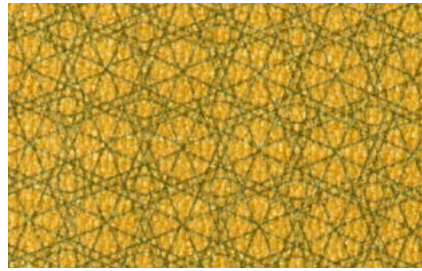
234



6246



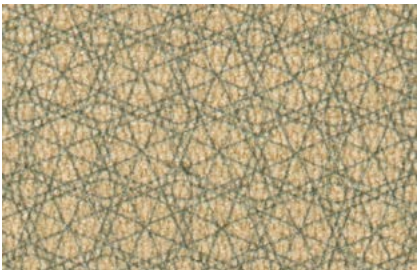
246



6211



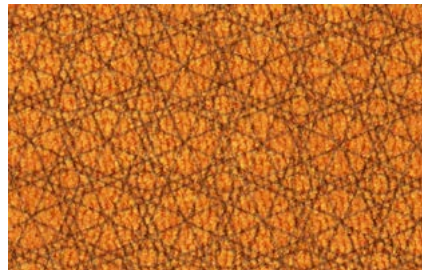
211



6230



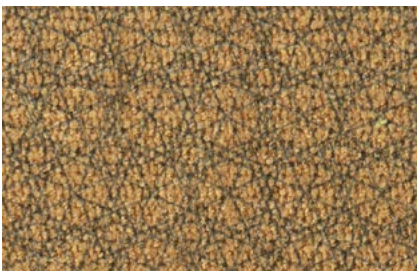
230



6220



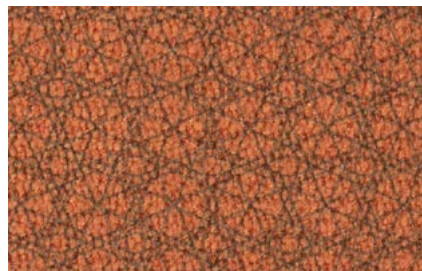
220



6251



251



6235



235



6231



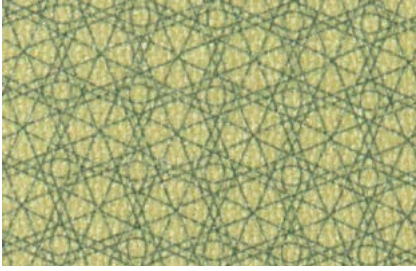
231



6214



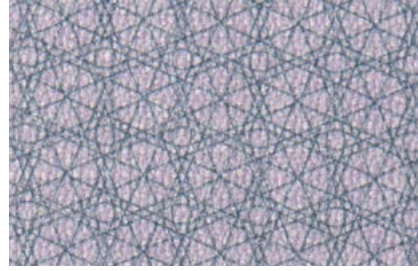
214



6240



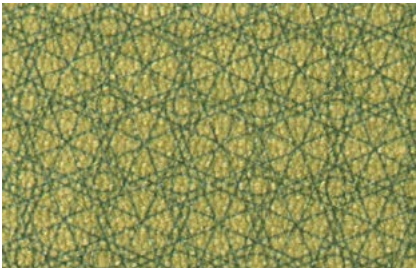
240



6255



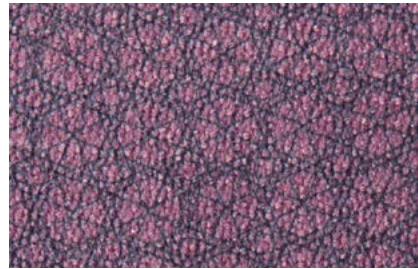
255



6200



200



6289



289



6264



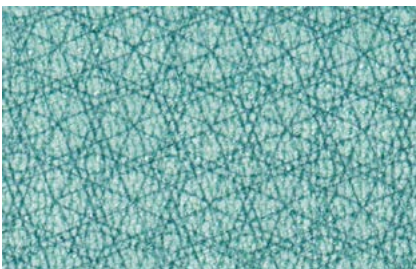
264



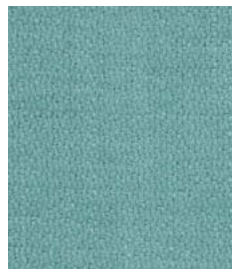
6236



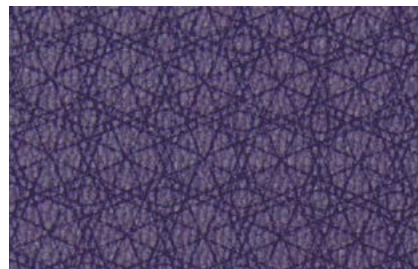
236



6217



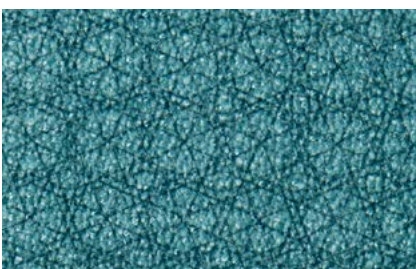
217



6254



254



6249



249



6250



250