



# Stretchy

Dis. 20 4011 - Dis. 20 4012



Texture speciali realizzate con la tecnica della stampa digitale, che donano un tocco ricercato e distintivo ai tessuti con le più elevate performance tecniche della gamma Flukso. Una trasformazione radicale: i motivi studiati esaltano la superficie del tessuto, che acquisisce un'anima decorativa e nuova, in grado di donare personalità ed energia agli ambienti più eleganti.

I pattern proposti da Flukso vengono applicati a una selezione di colori della collezione di partenza, che può essere utilizzata in abbinamento per creare effetti alternati di unito e stampato.

Stretchy è un tessuto a maglia, realizzato con un filato in poliestere FR e con un peso di 300 g/m<sup>2</sup>. Con la sua particolare armatura tessile, Stretchy è adatto a rivestire con facilità e ottimi risultati estetici tutti i mobili imbottiti, anche quelli dal design più estremo. Essendo molto traspirante, è il tessuto ideale per realizzare pannelli acustici e prodotti imbottiti che contengono materiali fonoassorbenti.

Special textures made by digital printing technique, which give a sophisticated and distinctive touch to the high-performing fabrics of the Flukso range. A radical transformation: the new patterns enhance the fabric surface, which takes on a new decorative soul that gives personality and energy to the most elegant settings.

The patterns proposed by Flukso are applied to a selection of colors from the base collection, which can be combined to create alternating solid and colorful effects.

Stretchy is a knit fabric made of FR polyester yarn and has a weight of 300 g/m<sup>2</sup>. With its particular fabric construction, Stretchy is suitable for upholstery with ease and excellent aesthetic results on all types of upholstered furniture, including extreme-design elements. Being very breathable, it is the ideal fabric to cover acoustic panels and padded products that contain sound-absorbing materials.

## SETTORI / SECTORS



## APPLICAZIONI / USES



## CARATTERISTICHE / FEATURES



ON REQUEST

ON REQUEST

ON REQUEST

ON REQUEST

## SCHEDA TECNICA / TECHNICAL DETAILS

	UNITÀ / UNIT	NORMA / TEST METHOD	VALORI / LIMIT VALUE
Peso / Weight	g/m <sup>2</sup>	-	300
Altezza / Width	cm	-	160 ± 3%
Composizione / Composition	-	-	100% PES FR
Pelosità superficiale e pilling / Fuzzing and pilling test	-	UNI EN ISO 12945-2	4/5
Resistenza all'abrasione / Abrasion resistance (Martindale)	cicli/cycles	UNI EN ISO 12947-2	100.000
Valutazione cambio colore a 12.000 cicli Martindale / Colour change evaluation at 12.000 Martindale cycles	grey scale	UNI EN ISO 105-A02	3/4
Solidità colori allo sfregamento a secco / Colour fastness to dry rubbing	grey scale	UNI EN ISO 105-X12	4/5
Solidità colori allo sfregamento a umido / Colour fastness to wet rubbing	grey scale	UNI EN ISO 105-X12	4/5
Solidità colori alla luce / Colour fastness to light (Xenotest)	blue scale	UNI EN ISO 105-B02	4/5



### RESISTENZA AL FUOCO FIRE RESISTANCE

UNI 9175 classe 1M  
EN 1021-1  
EN 1021-2  
BS 5852-1 cigarette test  
BS 5852-1 match test  
BS 5852 crib 5  
TB 117 2013

**NORME DI PULIZIA** — Per le istruzioni dettagliate di lavaggio e manutenzione del tessuto e per conoscere i prodotti più adatti alla sua pulizia, consultare il sito [www.flukso.it](http://www.flukso.it).

**CLEANING INSTRUCTIONS** — Check our website [www.flukso.it](http://www.flukso.it) for detailed washing and maintenance instructions related to the fabric and to know the most suitable cleaning products.



Campione gratuito di modico valore non destinato alla vendita, esente IVA punto D - Art. 2 DPR 26.10.1972 n°633. Esente DDT punto 6 - Art. 4 DPR 06.10.1978 n°627.

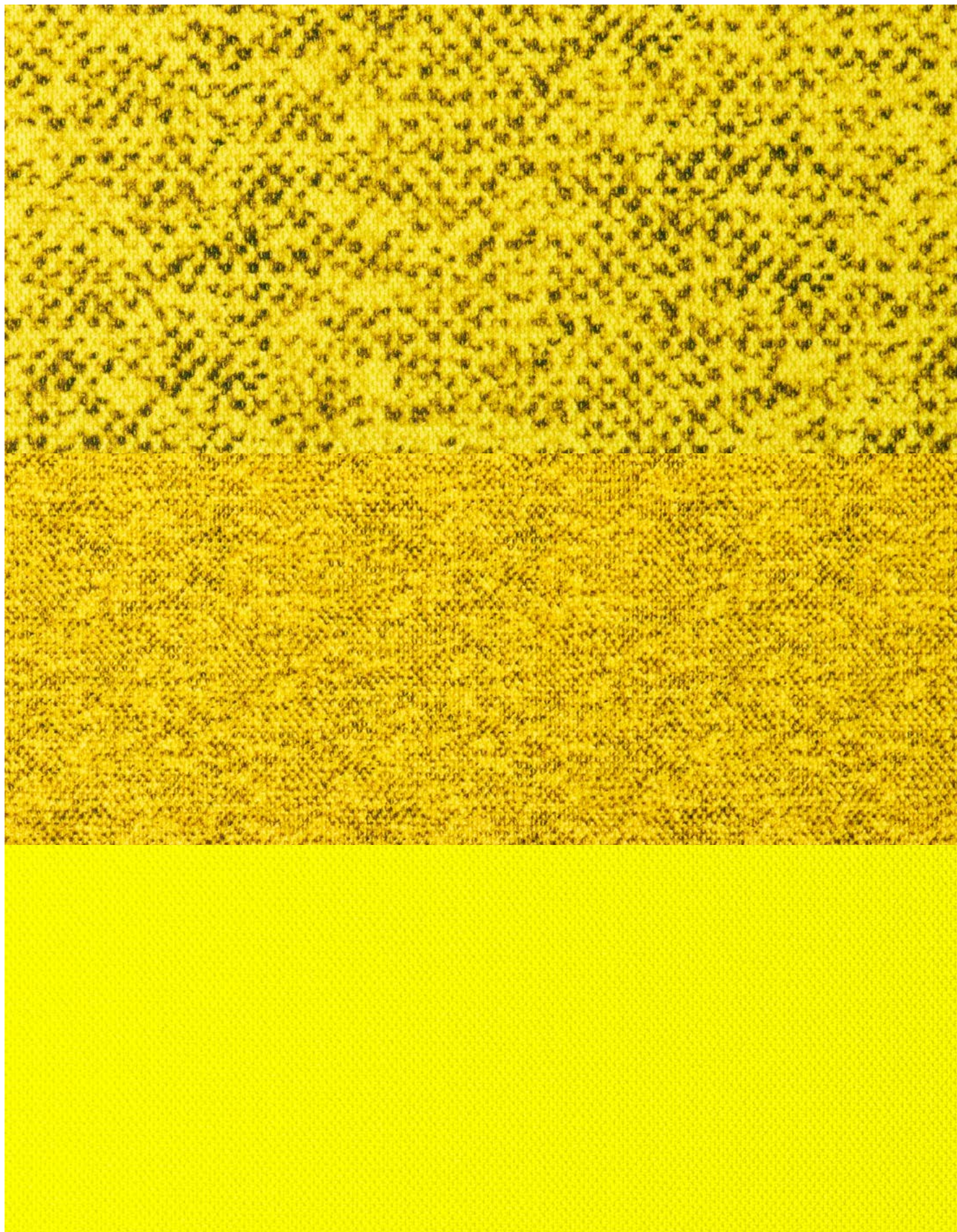
Questi valori sono dati a titolo indicativo ed in buona fede e non possono essere considerati in alcun caso vincolanti. L'impiego del prodotto deve essere valutato in base a ciò che si deve realizzare. Non si risponde del suo utilizzo per impieghi impropri. Sono ammesse leggere differenze di colori tra lotti diversi.

The overmentioned data correspond to average values communicated in good faith, but they cannot be considered as a contract document. The product use has to be considered in term of what has to be realized. The product cannot be held up responsible when it is improperly used. Slight colour differences among several lots are admitted.



Stretchy Dis. 20 4011 - Dis. 20 4012

**CONTRACT & RESIDENTIAL  
PRINTED COLLECTION**



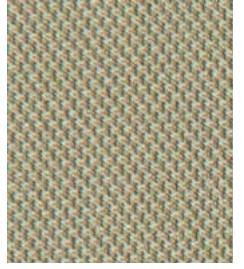




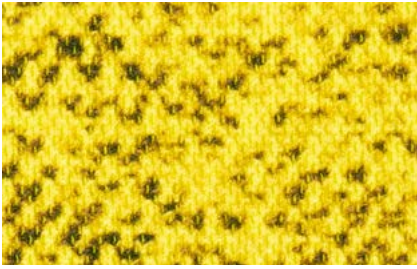
607



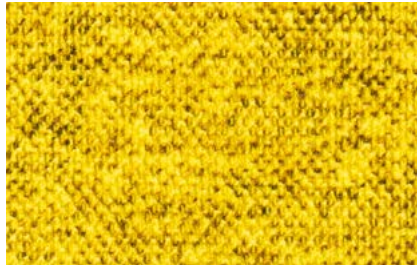
617



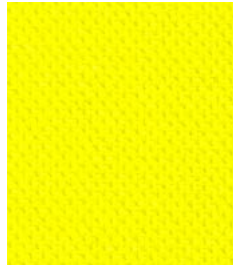
7



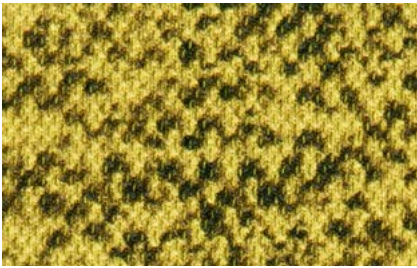
6042



6142



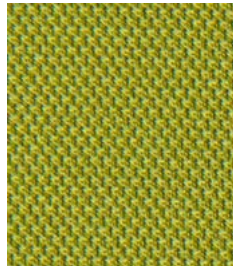
42



6045



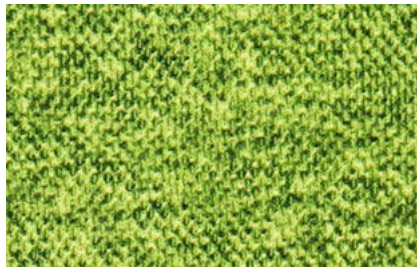
6145



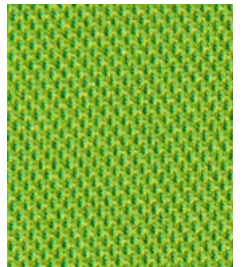
45



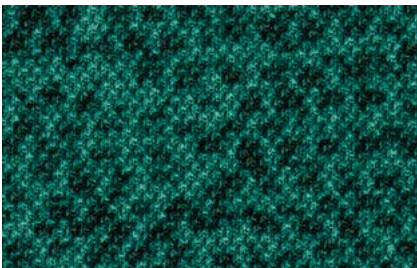
6047



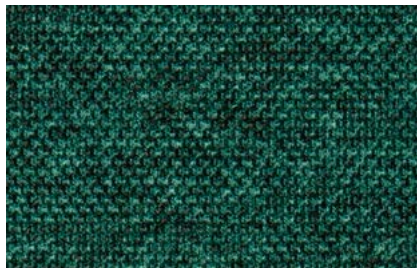
6147



47



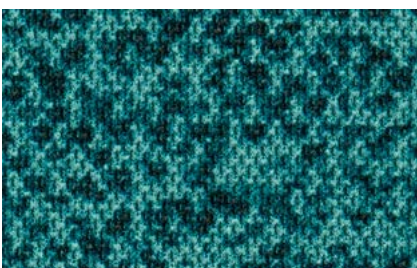
6011



6111



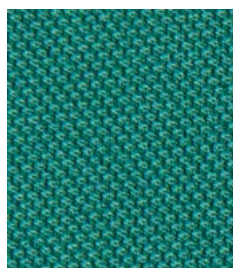
11



605



615



5

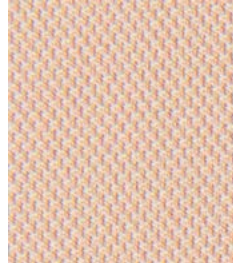




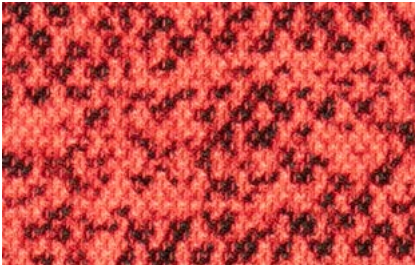
6025



6125



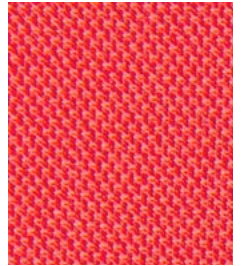
25



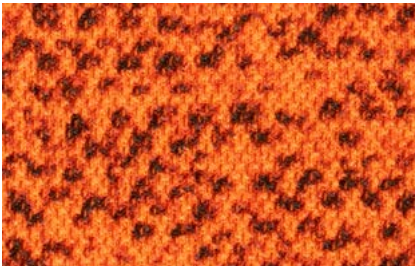
6035



6135



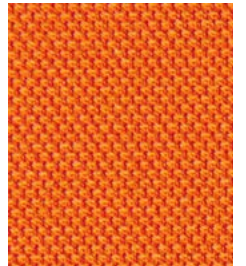
35



6034



6134



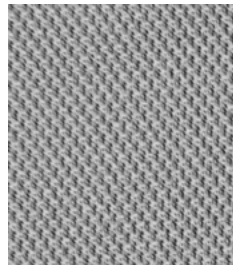
34



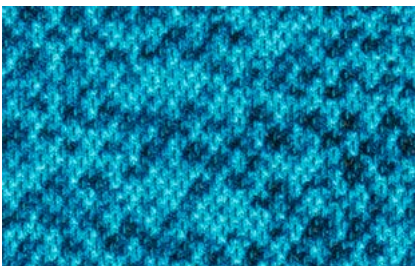
6012



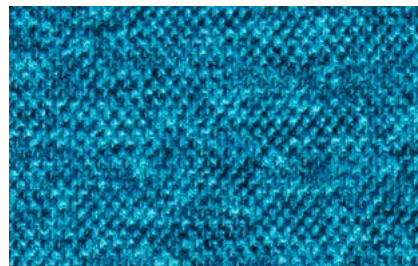
6112



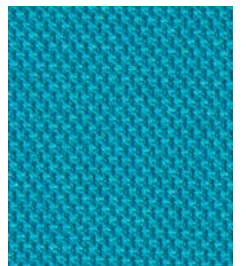
12



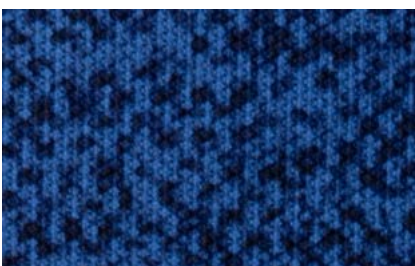
6044



6144



44



6041



6141



41